



AUTOMOTIVE Spare Parts

Suitable for....

TATA 709/909



Catalogue 2024-25



Delivering Quality Worldwide



www.sp-groupindia.com

ੴ ਸਤਿਗੁਰ ਪ੍ਰਸਾਦਿ

ਸਚਹੁ ਓਰੈ ਸਭੁ ਕੋ ਓਪਰਿ ਸਚੁ ਆਚਾਰੁ।।

ਗੁਰੂ ਨਾਨਕ

**TRUTH IS THE HIGHEST VIRTUE
BUT HIGHER STILL IS TRUTHFULL LIVING
GURU NANAK**

Item Index Item Wise.

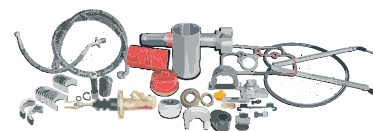


Srl no.	Item Name	Item Code.	Page no.
1	Accelerator cable	SI-18321	08
2	Air Brake Chamber mount brkt. (LH+RH)	SI-18725	29
3	Air Brake Hose (24") SMALL	SI-18286	08
4	Air Brake Hose (30") MEDIUM	SI-18285	08
5	Air Cleaner Hose	SI-18500	15
6	Air compressor head (77mm)	SI-18207	05
7	Air compressor flexible pipe	SI-18498	09
8	Air compressor Ring (77mm)	SI-18471	06
9	Air cooler hump hose	SI-18303	14
10	Anti roller bar bush	SI-18773	28
11	Assembly Cross Member FRONT	SI-18779	35
12	Assembly Cross Member	SI-18780	35
13	Assembly Injector	SI-18772	32
14	Ball joint RH	SI-18674	20
15	Ball joint LH	SI-18675	20
16	Bearing (set of 2pcs.) For AIR COMPRESSOR	SI-18358	34
17	Bearing QJ-209	SI-0063	21
18	Bearing with hub 6208 WOS	SI-0061	21
19	Bearing Tapper roller	SI-18733	19
20	Bearing NRB 7012TN	SI-18727	21
21	Bellow	SI-18777	34
22	Belt/ v belt	SI-18768	12
23	Bolt For Axle With Locking Nut	SI-18322	33
24	Bonnet hing	SI-18778	34
25	Brake Chamber 12/12	SI-18238	02
26	Brake Lining	SI-18731	29
27	Backup switch	SI-18705	31
28	Brake Drum	SI-16012	31
29	Brake Drum O/M	SI-18506	32
30	Brake Drum N/M	SI-3081	32
31	Brush kit	SI-18794	36
32	Bumper fog lamp	SI-18437	14
33	CAM SHAFT SMALL BOLT	SI-18583	16
34	CAM SHAFT BIG BOLT	SI-18699	17
35	Cage for Center Bearing	SI-18350	28
36	Center Bearing Rubber.	SI-18300	28
37	Center bolt 12mmX14"	SI- 18323	36
38	Chamber Gasket	SI-18366	11
39	Clamp for U Bolt	SI-18209	17
40	CLAMP SUPPORT (Alluminium Gutka)	SI-18254	28
41	CLAMP SUPPORT Suspension rubber	SI-990331	28
42	CLAMPING ROD	SI-18774	33
43	Clutch cover (280mm) MDA-T-2875	SI-10053	01
44	Clutch master cylinder assy.	SI-7132A	18
45	Clutch master cylinder full kit	SI-6237	18
46	Clutch master cylinder half kit	SI-6236X	18
47	Clutch patti with cone N/M	SI-18571	19

TATA 709/909



Item Index Item Wise.



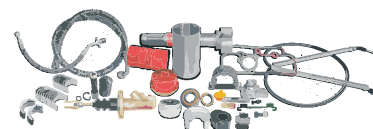
Srl no.	Item Name	Item Code.	Page no.
48	Clutch patti with boot	SI-18745	19
49	Clutch plate (280mm) MCE-T-2875 AF	SI-0488	01
50	Coil Spring	SI-16090	18
51	Combination Switch (RHD)	SI-18754	30
52	Cooling plate 4 cyl.	SI-18763	10
53	Counter shaft 39t.	SI-18662	27
54	Crank Shaft	SI-18759	28
55	Crank Shaft Washer	SI-18503	02
56	Cross Assembly Steering Shaft	SI-18301	20
57	Crown Wheel Pinion (8X33)	SI-16090	35
58	DDU SENSOR	SI-18584	06
59	DDU PLATE	SI-18656	01
60	Diaphragm rubber	SI-18198	24
61	Diesel Filter Cover (Bosch type)	SI-18363	32
62	Distributor Assembly	SI-18257	01
63	Drag Link Kit	SI-18367	20
64	Drive Assembly (SP3397)	SI-18325	33
65	Drive Assembly (SP517)	SI-18324	33
66	Dual brake valve	SI-18769	23
67	Engine Oil Cap	SI-18317	32
68	Engine Mounting (Left)	SI-18450	29
69	Engine Mounting (Right)	SI-18451	29
70	Exhaust Gasket (3 hole)	SI-18298	10
71	Exhaust Pipe Front	SI-18761	10
72	Exhaust Manifold	SI-18761	09
73	Fuel injection pipe (set of 4pcs.)	SI-18479	09
74	FILTER/Diesel Filter Assy. (blue)	SI-18356	07
75	FILTER/Fuel Filter (Bosch Type)	SI-18308	07
76	FILTER/Lube Filter	SI-18309	06
77	FLOWER KIT	SI-18676	04
78	Fork	SI-18775	34
79	Gasket (3 hole)	SI-16298	11
80	Gasket 4 Cylinder (Steel)	SI-16944	11
81	Gasket For Water Pump	SI-18357	11
82	Gasket overhaul	SI-18764	12
83	Gasket 4 cylinder	SI-18687	12
84	Gasket inlet	SI-18766	12
85	Gasket/ chamber cover	SI-18765	12
86	Gear Lever Kit	SI-18316	33
87	Gear 2nd speed 32t.	SI-18657	25
88	Gear 3rd speed 23t.	SI-18658	25
89	Gear 4th speed 26t.	SI-18659	25
90	Gear (helical gear) 4th speed 26t.	SI-18661	25
91	Gear (CONST.MESH GEAR)	SI-18746	25
92	Gear (REVERSE GEAR)	SI-18747	26
93	Gear (ENGAGING GEAR 2ND & 3RD GEAR)	SI-18686	26
94	Gear (ENGAGING GEAR 4TH & 5TH GEAR)	SI-18682	26

TATA 709/909



Disclaimer: Products are not original equipment. But can however be interchanged. Other manufacturers part are given for cross reference purpose only. All details and specification contained in this publications are based on the latest information available at the of publication. While every precaution is taken to ensure the accuracy of the contents onus cannot be accepted for any error or omissions inadvertently made.

Item Index Item Wise.

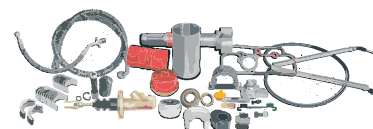


Srl no.	Item Name	Item Code.	Page no.
95			
96	Gear (SLEEVE RING MAIN DRIVE GEAR)	SI-18708	26
97	Graduted hand control valve	SI-18681	06
98	Grease Cap	SI-18359	32
99	Head Light Assy. High beam (Left)	SI-18245	13
100	Head Light Assy. High beam (Right)	SI-18246	13
101	Head Light Assy. Low beam (Left)	SI-18247	13
102	Head Light Assy. Low beam (Right)	SI-18248	13
103	Hose Turbo	SI-18304	15
104	Hub Bolt with Nut (2602)	SI-18261	29
105	Inlet oil pipe	SI-18691	09
106	King Pin with bush (Rear) 22X140mm	SI-18361	17
107	King Pin with bush (front) 20X127mm	SI-18362	17
108	King Pin Bearing	SI-18488	21
109	KIT/Cylinder Head repair kit (MAJOR)	SI-18256	05
110	KIT/Cylinder Head repair kit (MINOR)	SI-18255	05
111	KIT/DBV Repair kit (MAJOR)	SI-18237	05
112	KIT/DDU Repair kit (MINOR)	SI-18221	05
113	KIT/Relay valve repair kit (Air brake)	SI-18203	06
114	KIT/hand control valve	SI-18786	07
115	Light/ Blinker Lamp RH	SI-18781	14
116	Light/ Blinker Lamp LH	SI-18782	14
117	LINER (97x100.50x222.15mm)	SI-18177	24
118	LINER	SI-18655	24
119	Lock for Spring Pin	SI-18297	24
120	Main Bearing Oil Seal	SI-18387	22
121	Main connecting bearing (STD)	SI-18305	02
122	Main connecting bearing (010)	SI-18306	02
123	Main connecting bearing (020)	SI-18307	02
124	Main Shaft	SI-18702	27
125	Pipe/ assy. air line	SI-18788	09
126	PISTON SET	SI-18795	03
127	PISTON SET (bare piston)	SI-18651	04
128	PISTON RING	SI-18438	04
129	PISTON RING (STD)	SI-18688	04
130	Power Steering Hose/ Hydraulic Hose (69") BIG	SI-18284	08
131	Radiator Hose (Small)	SI-18499	15
132	Radiator Hose (Big)	SI-18501	15
133	Scam Shaft Front/Left	SI-18312	16
134	Scam Shaft Front/Right	SI-18313	16
135	Scam Shaft Rear/Left	SI-18314	16
136	Scam Shaft Rear/Right	SI-18315	16
137	Shim (Thick)	SI-18497	22
138	Shim (Thin)	SI-18496	22
139	Shifter sleeve	SI-18748	26
140	Shock Absorber (Front)	SI-18167	19
141	Shock Absorber (Rear)	SI-18166	19

TATA 709/909



Item Index Item Wise.



Srl no.	Item Name	Item Code.	Page no.
142	Side Indicator Assy.	SI-18514	14
143	Side Indicator Assy.	SI-18513	14
144	Side Indicator Light	SI-18364	13
145	Spacer /front Distance Piece	SI-18578	24
146	Spacer /front Distance Piece	SI-18578	24
147	Slack Adjuster (FRONT)	SI-18218	10
148	Slack Adjuster (REAR-LEFT)	SI-18220	10
149	Slack Adjuster (REAR-RIGHT)	SI-18219	10
150	Speed sensor	SI-18703	30
151	Spider Gear Kit	SI-18360	03
152	Spider Gear Kit	SI-18701	03
153	Spider Gear Kit (OE QUALITY)	SI-18724	03
154	Spring (Green)	SI-18351	18
155	Spring Hanger (Rear)	SI-18365	22
156	Starter motor	SI-18420	36
157	Steering Pump Hose	SI-18372	08
158	Steering Pump	SI-18592	06
159	Stud with nut	SI-18776	34
160	Switch/ service indicator	SI-18770	31
161	Switch/ solenoid switch 12v	SI-18789	30
162	Synchronizer ring (OE QUALITY)	SI-18679	27
163	Synchronizer ring	SI-18716	27
164	Temprature switch	SI-18704	30
165	Tapper roller bearing	SI-18733	21
166	Thermostat Housing brass	SI-18732	31
167	Thermostat Housing plastic	SI-18405	31
168	Tie Rod End (left+right) 24x1.5x16mm	SI-18318	20
169	Top Cover	SI-18299	11
170	Turbo Charger	SI-18232	35
171	Turbo Core Assy.	SI-18455	23
172	Top shaft 19 T.	SI-18660	27
173	U Bolt 135X82X12mm	SI-UB135-82-12	17
174	U.J. Cross 35X107mm	SI-18264	23
175	U.J. Cross 35X126mm	SI-18263	23
176	VALVE SEAL SET	SI-18677	04
177	Washer kit	SI-18472	36
178	Water Pump Assy.	SI-18374	01
179	Water Pump kit	SI-18762	07
180	Water seprator head	SI-18302	23
181	Wiper Blade 24"	SI-18230	30
182	Wiper motor	SI-18421	36

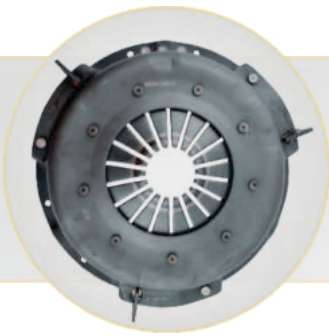
TATA 709/909





SI-0488
Clutch plate (280mm)

Rep no: 264125200134, MCE-T-2875 AF



SI-10053
Clutch cover (280mm)

Rep no: 264025400102, 264125400105, MDA-T-2875



SI-18374
Water Pump Assy. T-709

Rep no: 252520100182, 252720100104



SI-18257
Distributor Assembly

Rep no: 100304941



SI-18656
Plate for Distributor Assembly





SI-18238
Brake Chamber 12/12



SI-18305
Main connecting bearing (STD)

Rep no: MS2758



SI-18306
Main connecting bearing (010)



SI-18307
Main connecting bearing (020)



SI-18503
Crank Shaft Washer set
(STD)





SI-18258
Hydraulic Head

Rep no: 1468334993-4AR



SI-18360
Spider Gear Kit
Big Gear-16 teeth
Small Gear-10 teeth



SI-18701
Spider Gear Kit
Big Gear-14 teeth
Small Gear-9 teeth



SI-18724
Spider Gear Kit (OE Quality)

Rep no: 885435020709



SI-18795
PISTON SET

Rep no: 602-12191W-STD





SI-18651
BARE PISTON SET

Rep no: 885403502527



SI-18438
PISTON RING

Rep no: 253403990228



SI-18688
PISTON RING (STD)

Rep no: 885403742534



SI-18676
FLOWER KIT

Rep no: 885426070709



SI-18677
VALVE SEAL SET

Rep no: 252701990193





SI-18207

Air compressor head (77mm)

Rep no: 350023001



SI-18237

DBV Repair kit (MAJOR)

Rep no: 300006019



SI-18256

Cyl. Head repair kit (MAJOR)

Rep no: 300001202



SI-18255

Cyl. Head repair kit (MINOR)

Rep no: 300001202



SI-18221

DDU Repair kit (MINOR)

Rep no: 300003086

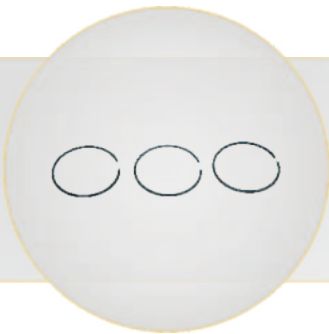




SI-18203

Relay valve repair kit (Air brake)

Rep no: 300003084



SI-18471

Air compressor Ring (77mm)



SI-18592

STEERING PUMP



SI-18681

GRADUATED HAND CONTROL VALVE

Rep no: 100304950, 257342420118

T-709/ 2516



SI-18584

DDU SENSOR





SI-18762
water Pump Kit Minor
Rep no: 252520100118
T-709/613



SI-18786
Repair Kit for Hand Control Valve
Rep no: 257342420001 , 278243700190
T-709/713



SI-18787
Air Filter Primary Secondary
Rep no: 252709130329 , 252709130330
T-709



SI-18356
Diesel Filter (blue)
Rep no: F002H20306



SI-18308
Fuel Filter (Bosch Type)
Rep no: 9451037404 / 9451037407





SI-18284

Power Steering Hose/ Hydraulic Hose (69") BIG



SI-18372

Steering Pump Hose



SI-18285

Air Brake Hose (30") MEDIUM



SI-18286

Air Brake Hose (24") SMALL



SI-18321

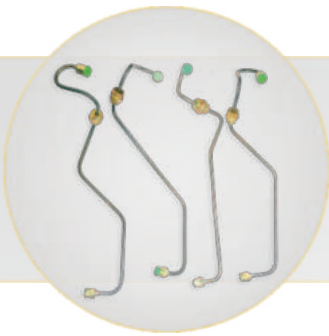
Accelerator cable

Rep no: 270530100112





SI-18788
ASSY AIR LINE (AIR INTAKE ELBOW TO LDA)
Rep no: 252709130274
T-709



SI-18479
Fuel Injection Pipe
set of 4pcs.



SI-18691
INLET OIL PIPE



SI-18498
Air compressor flexible pipe



SI-18760
Exhaust Manifold
Rep no: 252714113713
T-709





SI-18761

Assy. Exhaust Pipe Front
Rep no: 264749200102
T-709



SI-18763

ASSEMBLY OIL COOLER WITH COVER,
Rep no: 252118173703
T-709,407,713,1109



SI-18218

Slack Adjuster (FRONT)

Rep no: 264142110160



SI-18219

Slack Adjuster (REAR-RIGHT)

Rep no: 264142110118



SI-18220

Slack Adjuster (REAR-LEFT)

Rep no: 26414231017





SI-18298

GASKET TC TO EXHAUST ELBOW (3 HOLE)

Rep no: 252714115313

T-709/909



SI-18357

Gasket For Water Pump



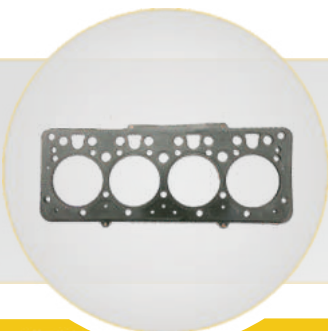
SI-18299

Top Cover



SI-18366

Chamber Gasket



SI-16944

Gasket 4 Cylinder (Steel)

Rep no: 252701155310

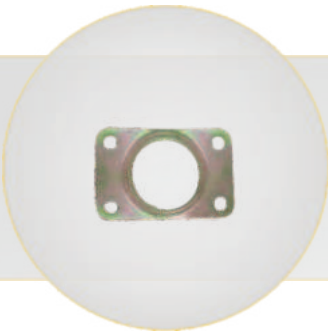




SI-18687
GASKET 4 CYLINDER
Rep no: 252701155310



SI-18764
ENGINE OVERHAUL GASKET
Rep no: 252701990101
T-709



SI-18766
GASKET INLET TO TC
Rep no: 252714115306
T-709/909

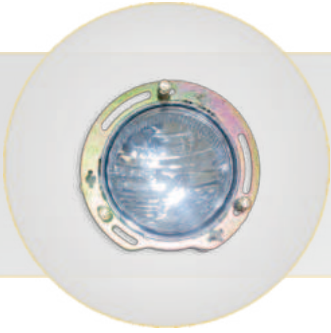


SI-18765
GASKET PUSH ROD CHAMBER COVER
Rep no: 252701145303
T-709



SI-18768
V Belt
Rep no: 252520156306
T-709/713





SI-18245

Head Light Assy. High beam (Left)

Rep no: 724H/B(LH)



SI-18246

Head Light Assy. High beam (Right)

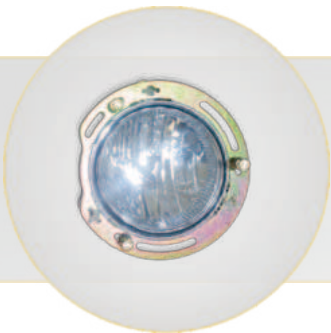
Rep no: 724H/B(RH)



SI-18247

Head Light Assy. Low beam (Left)

Rep no: 724L/B(LH)



SI-18248

Head Light Assy. Low beam (Right)

Rep no: 724L/B(RH)



SI-18364

Side Indicator Light





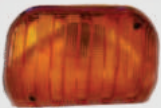
SI-18437
Bumper Fog Lamp



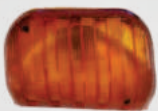
SI-18514
Side Indicator Assy.



SI-18513
Side Indicator Assy.



SI-18781
ASSEMBLY BLINKER LAMP WITH BULB RH
Rep no: 265154400173
T-709/ 407



SI-18782
ASSEMBLY BLINKER LAMP WITH BULB LH
Rep no: 265154400174
T-709/ 407





SI-18303
Air cooler hump hose

Rep To: 252714605808



SI-18304
Hose Turbo



SI-18499
Radiator Hose (Small)



SI-18501
Radiator Hose (Big)
Both side inch longer
Rep To: 252750105887



SI-18500
Air Cleaner Hose

Rep To: 252709135880, 252709135881





SI-18312
Scam Shaft Front/Left

Rep To: 264142105104



SI-18313
Scam Shaft Front/Right

Rep To: 264142105105



SI-18314
Scam Shaft Rear/Left

Rep To: 264142305106



SI-18315
Scam Shaft Rear/Right

Rep To: 264142305107



SI-18583
Cam Shaft Small bolt
Rep To: 252705100112
bs2/bs3/bs4





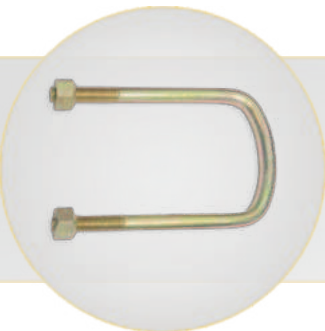
SI-18699
Cam Shaft Big bolt
Rep To: 252705100112
bs2/bs3/bs4



SI-18361
Spring Pin with Brass Bush (Rear)
Size: 22X140mm



SI-18362
Spring Pin with Brass Bush (Front)
Size: 20X127mm



SI-UB135-82-12
U Bolt
Size: 135X82X12mm



SI-18209
Clamp for U Bolt





SI-7132A
Clutch master cylinder assy.

Rep no: 29066525/ 29068116



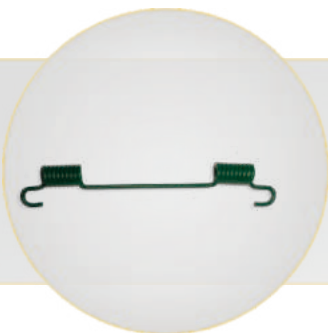
SI-6237
Clutch master cylinder full kit

Rep no: 26992510 0177/ 29966903



SI-6236X
Clutch master cylinder half kit

Rep no: 26512910 0148/ 29966682



SI-18351
Spring (Green)



SI-16090
Coil Spring





SI-18166
Shock Absorber (Rear)

Rep no: 264032600121, 261832600111, 264132600119



SI-18167
Shock Absorber (Front)

Rep no: 264132300114, 261832300101



SI-18571
Clutch patti N/M



SI-1440
Clutch patti O/M



SI-18745
Clutch patti with boot O/M





SI-18301
Cross Assembly Steering Shaft



SI-18318
Tie Rod End
Size: 24X1.5X16mm



SI-18367
Drag Link Kit

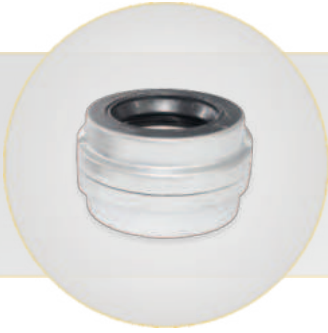


SI-16674
BALL JOINT (RIGHT)
Rep no: 264133800106



SI-16675
BALL JOINT (LEFT)
Rep no: 264133800107





SI-0061

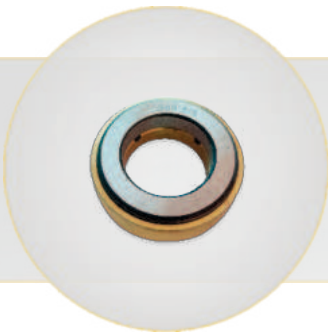
Bearing with hub 6208 WOS

Rep no: 27242560 0151/ 581225601602



SI-0063

Bearing QJ-209



SI-18488

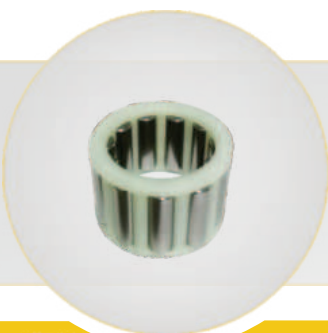
king Pin Bearing
909 (**STD**)



SI-18733

TAPER ROLLER BEARING

REP: 266135303105



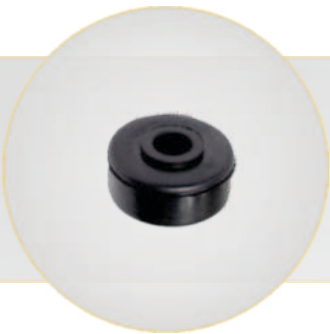
SI-18727

BEARING
NRB 7012TN

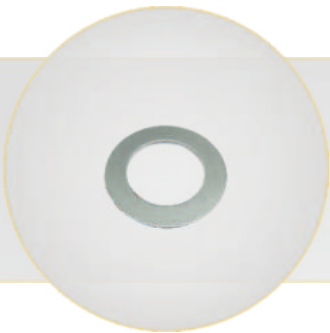




SI-18365
Spring Hanger (Rear)
Rep no: 264032403701



SI-18773
ANTI ROLLER BAR BUSH
Rep no: 265132807703
T-709/608



SI-18497
Shim (Thick)



SI-18496
Shim (Thin)



SI-18387
Main Bearing Oil Seal





SI-18264
U.J. Cross
Siz: 35X107mm



SI-18263
U.J. Cross
Siz: 35X126mm



SI-18769
DUAL BRAKE VALVE
Rep no: 264143700102
T-709/713



SI-18302
Water separator head



SI-18455
Turbo Core Assy.
K166724





SI-18297
Lock for Spring Pin



SI-18198
Diaphragm rubber

Rep no: M-848650



SI-18578
Spacer /front Hub Wheel Distance Piece

Rep no: 264133209901



SI-18177
LINER (97x100.50x222.15mm)



SI-18655
LINER

REP: 252701103727





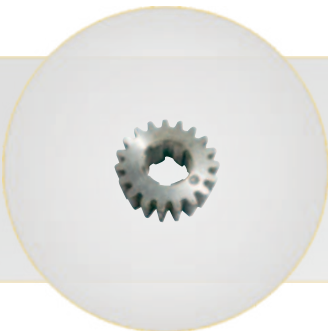
SI-18657
GEAR
2nd Speed (32t.)
Rep: 2516 2620 5431



SI-18658
GEAR
3rd Speed (23t.)
Rep: 2516 2620 0176



SI-18659
GEAR
4th Speed (26t.)
Rep: 2516 2630 5411



SI-18661
HELICAL GEAR
4th Speed (20t.)
Rep: 2516 2620 0197



SI-18746
CONST. MESH GEAR

Rep: 251626305408





SI-18747
REVERSE GEAR

Rep: 2516 2620 5442



SI-18686
ENGAGING GEAR
2ND & 3RD GEAR



SI-18682
ENGAGING GEAR
4TH & 5TH GEAR



SI-18708
SLEEVE RING MAIN DRIVE GEAR/
SYNCHRONIZER RING
Rep: 251626254601



SI-18748
SHIFTER SLEEVE

Rep: 250826204601





SI-18679
SYNCHRONIZER RING (OE Quality)

Rep: 203802, 250826203801



SI-18716
SYNCHRONIZER RING

Rep: 203802, 250826203801



SI-18662
COUNTER SHAFT
39 Teeth

Rep: 2516 2630 7906



SI-18702
MAIN SHAFT

Rep: 251626207905



SI-18660
MAIN DRIVE (TOP GEAR SHAFT)
19 Teeth

Rep: 2516 2625 7904





SI-18759
CRANKSHAFT (INTEGRAL)
Rep no: 252703107933
T-709/609



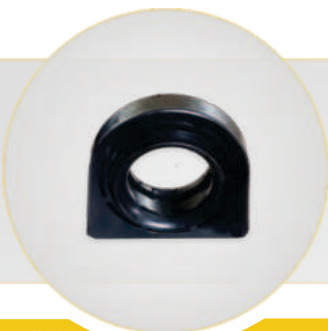
SI-18254
CLAMP SUPPORT (Alluminium Gutka)
Rep no: 282132803702



SI-990331
Suspension rubber/bush
for (CLAMP SUPPORT)



SI-18350
Cage for Center Bearing
Rep no: 257341303307



SI-18300
Center Bearing Rubber.
Rep no: 257641306301, 257341307505





SI-18261

Hub Bolt with Nut (2602)



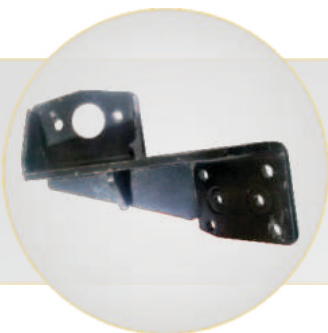
SI-18450

Engine Mounting (LEFT)



SI-18451

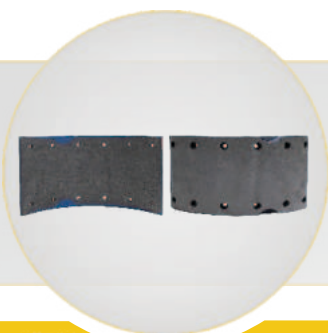
Engine Mounting (RIGHT)



SI-18725

ASSY. BRAKE CHAMBER MOUNTING BRACKET
(LH+RH)

Rep: 264142310126



SI-18731

BRAKE LINING
WITH RIVIT

Rep: 885442130909





SI-18230
Wiper Blade 24"

Rep no: 264382400104



SI-18789
Solenoid Switch 12V
Rep no: 265115100102, 265115100130
T-709



SI-18754
COMBINATION SWITCH (RHD)

Rep no: 265454510119



SI-18703
SPEED SENSOR

Rep no: VM710320



SI-18704
TEMPRATURE SWITCH





SI-18705
BACKUP SWITCH



SI-18770
SERVICE INDICATOR BS1 2 3 4 OR 6
Rep no: 254709139918
T-709/909



SI-18732
THERMOSTAT HOUSING 4 WAY.
(BRASS)

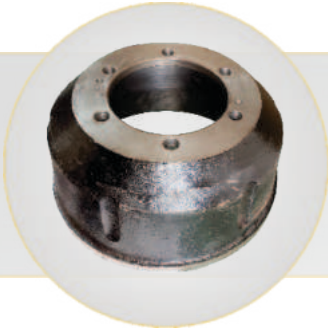


SI-18405
THERMOSTAT HOUSING 4 WAY.
(PLASTIC)



SI-16012
BRAKE DRUM
Rep no: 264142103709
T-909/ MARCOPOLO





SI-18506
BRAKE DRUM **O/M**

T-709/ 613



SI-3081
BRAKE DRUM **N/M**

Rep no: 264142103709, 264142103701

T-709/613



SI-18359
Grease Cap



SI-18363
Diesel Filter Cover (Bosch type)

Rep no: F002 H20136



SI-18317
Engine Oil Cap





SI-18324
Drive Assembly
(SP517)



SSI-18325
Drive Assembly
(SP3397)



SI-18316
Gear Lever Kit



SI-18322
Bolt For Axle With Locking Nut



SI-18774
Clamping Rod
Rep no: 252723400114
T-709





SI-18775

Fork

Rep no: 264130109902

T-709



SI-18776

STUD WITH 2 NUT

Rep no: 26653560880

T-709/407



SI-18778

BONNET HINGE

Rep no: 264175200116

T-709



SI-18358

Bearing (set of 2pcs.) For AIR COMPRESSOR

Rep no: 3854 1306 2534



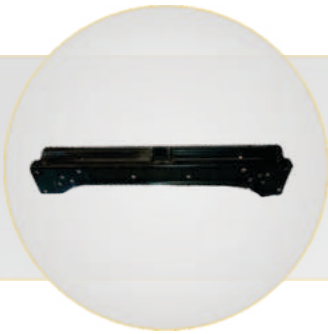
SI-18777

Bellow

Rep no: 264126800188

T-709/713





SI-18779
ASSEMBLY CROSS MEMBER FRONT
Rep no: 264131200110
T-709/909



SI-18780
ASSEMBLY CROSS MEMBER
Rep no: 264331207104
T-709



SI-18772
ASSY INJECTOR
Rep no: 252701160117
T-709



SI-18232
Turbo Charger
Rep no: 252714510106/ 252714510111
T-709/909



SI-16090
Crown Wheel Pinion





SI-18421
WIPER MOTER ASSY.
24V



SI-18420
STARTER MOTOR ASSY.
Rep no: 26925113A, 26258785



SI-18794
BRUSH ASSY. KIT
Rep no: 26244619



SI- 18323
Center bolt T-709

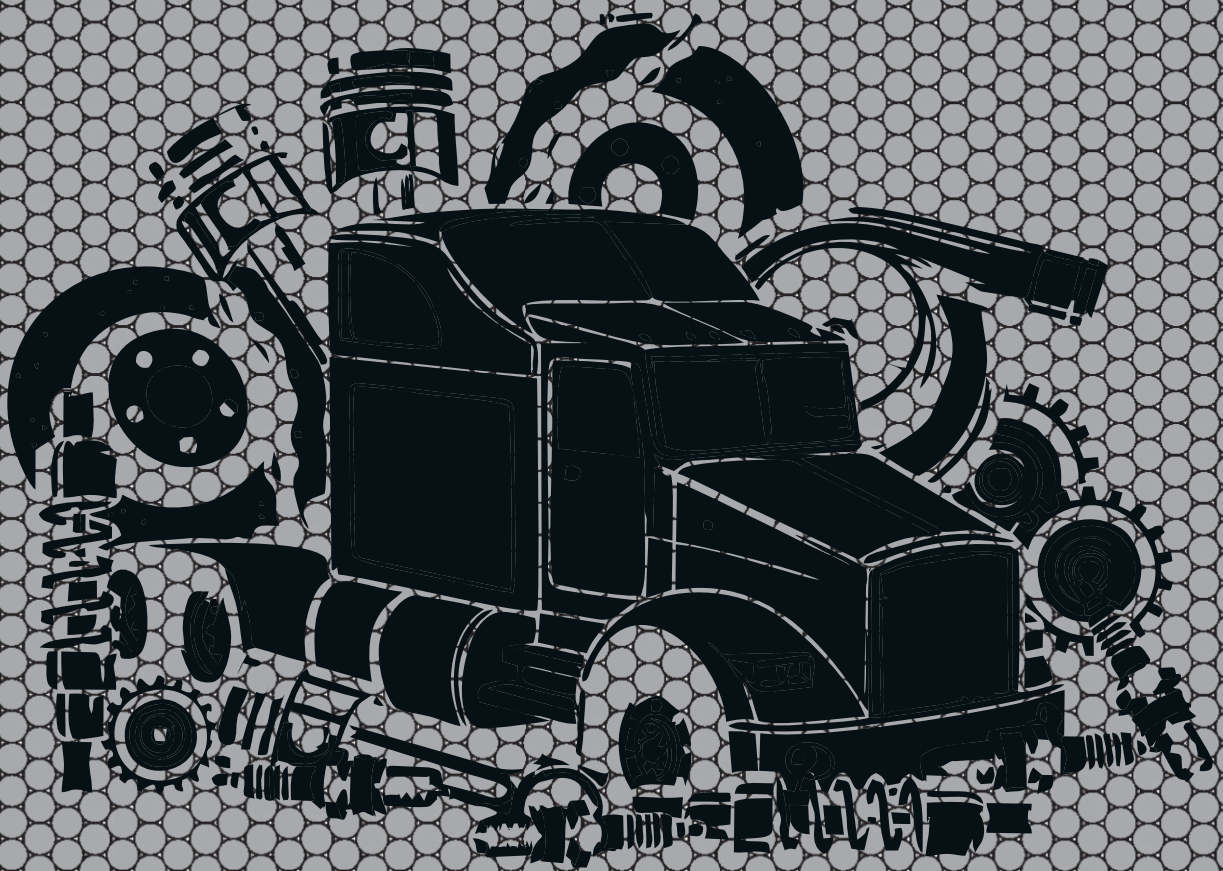


SI-18472
WASHER FOR SPIDER KIT
Set of 6pcs.



AUTOMOTIVE SPARE PARTS

Drive Confidently with our High-Performance Parts



www.sp-groupindia.com



Disclaimer:

Products are not original equipment. But can however be interchanged. Other manufacturers part are given for cross reference purpose only. All details and specification contained in this publications are based on the latest information available at the of publication. While every precaution is taken to ensure the accuracy of the contents of us, cannot be accepted for any error or omissions inadvertently made.